

  
**HYPRO<sup>®</sup>**

***ROLLER PUMPS***



**PUMPS**  
Q U A L I T Y S I N C E 1 9 4 7

# Heavy-duty, Positive Displacement Pumps

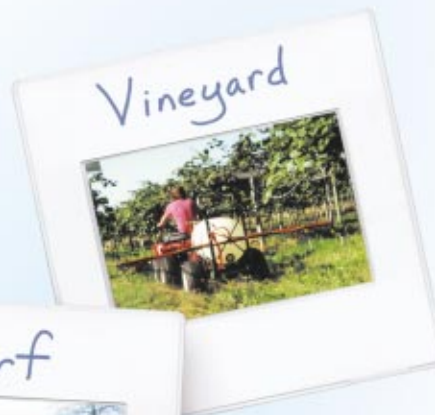
Hypro roller pumps are the most popular pumps worldwide for agricultural tasks. These low cost, highly versatile pumps are used for spraying and transferring a variety of fluids including insecticides, herbicides, fungicides, emulsives, aromatic solvents, liquid fertilizers and many other nonabrasive liquids. All pumps (excluding the 1200 Series) are available in three materials; cast-iron, Ni-resist or Silver Series™. On average the Silver Series pumps last up to 2½ times longer\* than the competition. (See page 3 for further details).

These pumps contain rollers that revolve inside the pump housing to force the spray solution through the outlet to the nozzle. Hypro roller pumps are easily adaptable to PTO, gas engine or electric motor drives. The pumps operate efficiently at PTO speeds of 540 and 1000 rpm. Pressure ranges are up to 300 psi with flow rates of 2-74 gpm.

\* Based on independent laboratory tests.

Hypro Roller pump quality features:

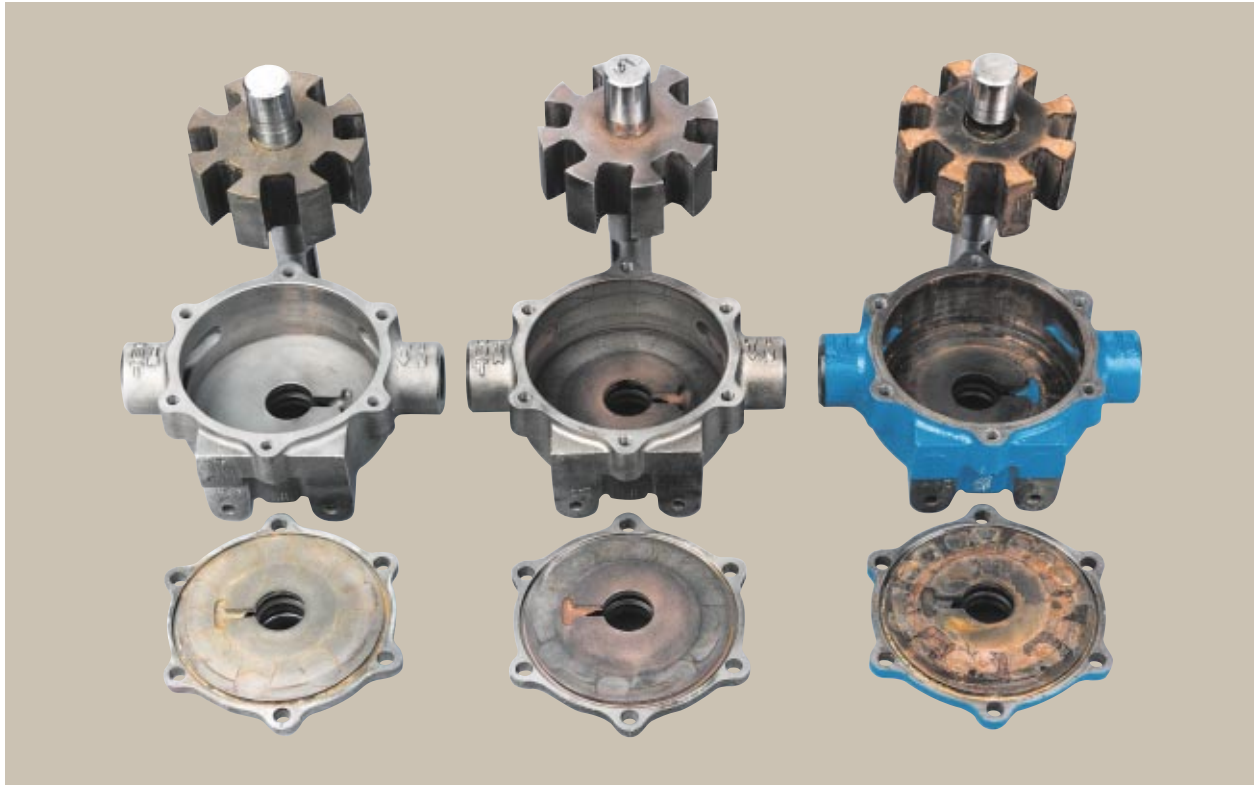
- Housing is available in cast iron, Ni-Resist or Silver Series
  - Ni-Resist is a high nickel content alloy for better corrosion resistance
  - Silver Series has a custom alloy that provides the best corrosion resistance and is *Ready for use with Roundup®*
- Self-priming operation; roller pumps should NOT be run dry
- Adaptable to PTOs or gas engines
- Standard seals are Viton or Buna-N (leather optional)
- Standard Super Rollers provide the chemical resistance of nylon and the life of polypropylene



# Roller Pump Comparisons

## Herbicide Users

*Get up to 10 times longer pump life with Hypro Silver Series XL™ Roller pumps!*

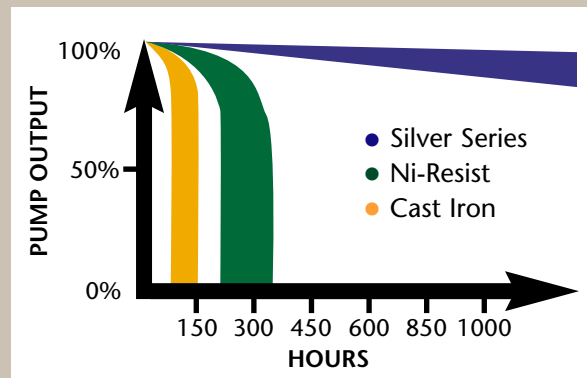


The three pumps shown above were photographed after being tested with a 30:1 mix of water and Roundup® herbicide. The Ni-Resist and cast iron indicate damage from pitting and corrosion, but the Silver Series is in like-new condition after more than 1000 hours of use.

### Herbicide users:

*Get up to 10 times longer pump life!*

- Cast iron pumps lasted to 140 hours before failure.
- Ni-Resist pumps lasted to 332 hours before failure.
- Silver Series ran over 1000 hours and still met new pump specs!



Roundup is a registered trademark of Monsanto Company.  
Silver Series XL is a trademark of Hypro Corporation.

# Pump Recommendations for Applications

## What Roller Pump, Rollers and Seals Should You Use?

Material options for rollers and seals are listed in the order of recommendations for usage. These recommendations are only a general guide. For suggestions on specific chemicals or applications, call Hypro's Technical/Applications Department at (800) 445-8360.

APPLICATION	SPECIFIC CHEMICALS	SUGGESTED PUMP, ROLLERS AND SEALS
WEED CONTROL CHEMICALS	Emulsions, soluble powders, sodium arsenate.	Use a Silver Series, Ni-Resist, or cast iron pump, Super Rollers and Viton seals  <b>NOTE:</b> For weed control chemicals containing glyphosate (such as Roundup®) or other acidics, use only a Silver Series pump with Super or poly rollers and Viton seals. Teflon rollers may be used up to 100 psi.
INSECT CONTROL	Emulsions not containing aromatic solvents.	
BRUSH CONTROL	Heavy-duty sprays using diesel oil for carrier.	Use a Silver Series, Ni-Resist or cast iron pump with Super Rollers. Use Viton or leather seals.
PEST CONTROL CHEMICALS, FUMIGANTS, ETC.	This category or use includes mosquito sprays, termite control liquids, nematocides, soil and grain fumigants where any of the following chemicals with aromatic solvents are present:  Pentachlorophenol, xylene, xylo, benzene, high sulphur fuel or diesel oil. Fumigants containing: ethylene dichloride, ethylene dibromide, carbon tetrachloride, perchlorethylene, trichlorethylene, methyl bromide, and other aromatic solvents.	
LIQUID FERTILIZERS	Up to 32% nitrogen content, or others if the liquid is atmospheric pressure and the temperature is handled.	Use a Silver Series or Ni-Resist pump with poly rollers and Buna-N seals.
POWDERED FERTILIZERS	Fertilizers dissolved in water (greenhouse plant food).	Use a Silver Series, Ni-Resist or cast iron pump, Super, Buna-N or poly rollers and Buna-N or Viton seals.  <b>NOTE:</b> Limit pressure to 100 psi when using Buna-N rollers or wettable powders.
PUMPING	Large quantities of plain water.	
SPRAYING	Wettable powder sprays.	
MATERIAL HANDLING	Heavy abrasive powders in suspension.	
ACIDS	Mild sulfuric acid for spraying. Mild muriatic acid, inhibited muriatic, etc.	Use a Silver Series pump, poly or Teflon rollers and Viton seals.  <b>NOTE:</b> Limit pressure to 100 psi when using Teflon rollers.

# Cast Iron, Ni-Resist or Silver Series

Model 4001 cast-iron 4-Roller



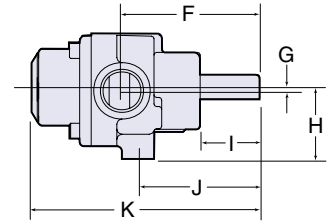
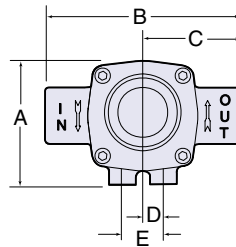
Pressure in PSI and BAR	GPM		HP		GPM		HP	
	L/min	HP	L/min	HP	L/min	HP	L/min	HP
	@1100 RPM		@1400 RPM		@1800 RPM			
0 PSI	5.5	.06	7.1	.10	9.1	.14		
0 BAR	20.8	.06	26.9	.10	34.4	.14		
25 PSI	4.9	.14	6.4	.20	8.5	.30		
1.7 BAR	18.5	.14	24.2	.20	32.2	.30		
50 PSI	4.4	.24	5.9	.32	8.0	.46		
3.4 BAR	16.6	.24	22.3	.32	30.3	.46		
75 PSI	4.1	.34	5.6	.44	7.6	.62		
5.2 BAR	15.5	.34	21.2	.44	28.7	.62		
100 PSI	3.8	.41	5.3	.56	7.3	.78		
6.9 BAR	14.4	.41	20.1	.56	27.6	.78		
125 PSI	3.5	.50	5.0	.68	7.0	.95		
8.6 BAR	13.2	.50	18.9	.68	26.5	.95		
150 PSI	3.3	.62	4.8	.78	6.7	1.1		
10.3 BAR	12.5	.62	18.2	.78	25.4	1.1		

## Features

- Max. flow: 9 gpm/34.1 L/min at 1800 rpm
- Max. pressure: 150 psi/10.3 BAR
- Max. rated speed: 1800 rpm
- Shaft size: 5/8" solid
- Port size: 3/4" NPT
- Max. fluid temperature: 140°F/60°C
- Cast iron, Ni-Resist or Silver Series housing
- Pump shaft rotation: CW (CCW available)\*
- Weight: 5 lbs.; 2.27 kg
- Rollers: Super Rollers standard (Poly, Teflon and Buna-N available)
- Shaft Seals: Viton standard (Buna-N, leather available)
- Available shaft adapters: See page 10.
- Special torque arm and base kit is available for gas engines

## Dimensions

	Standard	Metric
A.	3"	76 mm
B.	4 3/4"	121 mm
C.	2 3/8"	60 mm
D.	1/2"	13 mm
E.	1"	25 mm
F.	3 3/8"	86 mm
G.	3/32"	2 mm
H.	1 3/4"	44 mm
I.	1 1/2"	37 mm
J.	3"	76 mm
K.	5 5/8"	141 mm



# Cast Iron, Ni-Resist or Silver Series

Model 4101 cast-iron 4-Roller



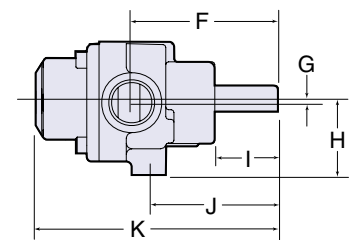
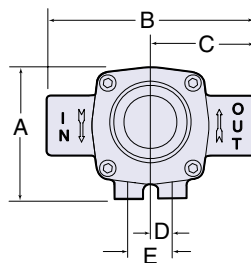
Pressure in PSI and BAR	GPM		HP		GPM		HP	
	L/min	HP	L/min	HP	L/min	HP	L/min	HP
	@1800 RPM		@2200 RPM		@2600 RPM			
0 PSI	5.0	.11	6.2	.14	7.2	.16		
0 BAR	18.9	.11	23.5	.14	27.3	.16		
25 PSI	4.8	.21	5.8	.27	6.9	.30		
1.7 BAR	18.1	.21	21.9	.27	26.1	.30		
50 PSI	4.5	.34	5.6	.40	6.6	.46		
3.4 BAR	17.0	.34	21.2	.40	25.0	.46		
75 PSI	4.2	.45	5.4	.55	6.4	.62		
5.2 BAR	15.9	.45	20.4	.55	24.2	.62		
100 PSI	3.9	.56	5.0	.68	6.0	.76		
6.9 BAR	14.8	.56	18.9	.68	22.7	.76		
125 PSI	3.7	.68	.82	.82	5.7	.92		
8.6 BAR	14.0	.68	17.8	.82	21.6	.92		
150 PSI	3.4	.78	4.4	.96	5.4	1.08		
10.3 BAR	12.9	.78	16.6	.96	20.4	1.08		

## Features

- Max. flow: 7 gpm/26.5 L/min at 2600 rpm
- Max. pressure: 150 psi/10.3 BAR
- Max. rated speed: 2600 rpm
- Shaft size: 3/8" solid
- Port size: 3/4" NPT
- Max. fluid temperature: 140°F/60°C
- Cast iron, Ni-Resist or Silver Series housing
- Pump shaft rotation: CW (CCW available)\*
- Weight: 5 lbs.; 2.27 kg
- Rollers: Super Rollers standard (Poly, Teflon and Buna-N available)
- Shaft Seals: Viton standard (Buna-N, leather available)
- Available shaft adapters: See page 10.
- Special torque arm and base kit is available for gas engines

## Dimensions

	Standard	Metric
A.	3"	76 mm
B.	4 3/4"	121 mm
C.	2 3/8"	60 mm
D.	1/2"	13 mm
E.	1"	25 mm
F.	3 3/8"	86 mm
G.	3/32"	2 mm
H.	1 3/4"	44 mm
I.	1 1/2"	37 mm
J.	3"	76 mm
K.	5 5/8"	141 mm



\* CCW (counterclockwise) and CW (clockwise) are determined when looking at the shaft end.

# Cast Iron, Ni-Resist or Silver Series

## Model 6500 cast-iron 6-Roller



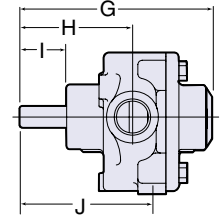
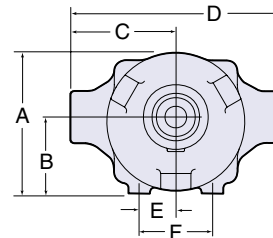
Pressure in PSI and BAR	GPM	HP	GPM	HP	GPM	HP
	L/min @540 RPM	HP	L/min @1000 RPM	HP	L/min @1200 RPM	HP
0 PSI	9.7	.08	18.2	.20	21.8	.30
0 BAR	36.7	.08	68.9	.20	82.5	.30
50 PSI	8.0	.38	16.5	.71	20.1	.90
3.4 BAR	30.3	.38	62.4	.71	76.1	.90
100 PSI	7.2	.68	15.4	1.26	19.1	1.51
6.9 BAR	27.3	.68	58.3	1.26	72.3	1.51
150 PSI	6.6	.97	14.7	1.80	18.2	2.14
10.3 BAR	25	.97	55.6	1.80	68.9	2.14
200 PSI	5.6	1.29	14.0	2.34	17.3	2.84
13.8 BAR	21.2	1.29	53	2.34	65.5	2.84
250 PSI	4.9	1.65	13.4	2.91	16.5	3.48
17.2 BAR	18.5	1.65	50.7	2.91	62.4	3.48
300 PSI	4.3	1.91	12.7	3.47	15.7	4.17
20.7 BAR	16.3	1.91	48.1	3.47	59.4	4.17

## Features

- Max. flow: 9.7 gpm/36.7 L/min at 540 rpm;  
18.2 gpm/68.9 L/min at 1000 rpm
- Max. pressure: 300 psi/20.7 BAR
- Max. rated speed: 1200 rpm
- Shaft size: 5/8" solid
- Port size: 3/4" NPT
- 1" hose barb inlet fitting for 1000 rpm operation
- Max. fluid temperature: 140°F/60°C
- Cast iron, Ni-Resist or Silver Series housing
- Pump shaft rotation: CCW (CW available)\*
- Weight: 9 lbs.; 4.1 kg
- Rollers: Super Rollers standard (Poly, Teflon and Buna-N available)
- Shaft Seals: Viton standard (Buna-N, leather available)
- Available PTO adapters: See page 10.
- Recommended PTO torque arm kit 3430-0540

## Dimensions

Standard	Metric
A. 4 1/2"	104 mm
B. 2 1/2"	56 mm
C. 3 1/6"	78 mm
D. 6 1/8"	156 mm
E. 1 1/6"	27 mm
F. 2 1/8"	54 mm
G. 5 1/2"	142 mm
H. 3 3/2"	83 mm
I. 1 3/8"	35 mm
J. 3 7/8"	48 mm



# Cast Iron, Ni-Resist or Silver Series

## Model 7700 cast-iron 7-Roller



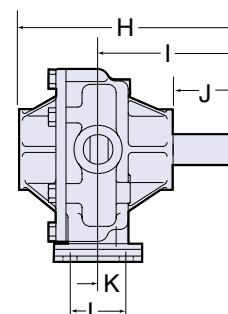
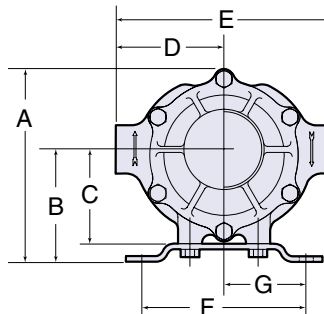
Pressure in PSI and BAR	GPM	HP	GPM	HP	GPM	HP
	L/min @540 RPM	HP	L/min @600 RPM	HP	L/min @800 RPM	HP
0 PSI	14.2	.23	15.3	.28	22.1	.37
0 BAR	53.7	.23	57.9	.28	83.6	.37
50 PSI	12.9	.56	14.0	.62	20.7	.86
3.4 BAR	48.8	.56	53	.62	78.3	.86
100 PSI	11.9	1.10	13.0	1.20	19.5	1.66
6.9 BAR	45	1.10	49.2	1.20	73.8	1.66
150 PSI	11.2	1.64	12.3	1.80	18.6	2.40
10.3 BAR	42.4	1.64	46.6	1.80	70.4	2.40
200 PSI	10.3	2.22	11.6	2.44	17.8	3.26
13.8 BAR	39	2.22	43.9	2.44	67.4	3.26

## Features

- Max. flow: 14.2 gpm/53.7 L/min at 540 rpm;  
22.1 gpm/83.6 L/min at 800 rpm
- Max. pressure: 200 psi/13.8 BAR
- Max. rated speed: 800 rpm
- Max. fluid temperature: 140°F/60°C
- Shaft size: 1 1/8" solid
- Port size: 3/4" NPT
- Cast iron, Ni-Resist or Silver Series housing
- Weight: 14 lbs.; 6.36 kg
- Pump shaft rotation: CCW (CW available)\*
- Rollers: Super Rollers standard (Poly, Teflon and Buna-N available)
- Shaft Seals: Viton standard (Buna-N, leather available)
- Available PTO adapters: See page 10.
- Recommended PTO torque arm kit 3430-0540

## Dimensions

Standard	Metric
A. 6"	152 mm
B. 3 1/2"	89 mm
C. 2 1 5/16"	75 mm
D. 3 3/8"	86 mm
E. 6 3/4"	171 mm
F. 5 1/8"	130 mm
G. 2 5/16"	65 mm
H. 6 1 5/16"	176 mm
I. 4 1 3/2"	112 mm
J. 2"	52 mm
K. 7/8"	22 mm
L. 1 3/4"	44 mm



\* CCW (counterclockwise) and CW (clockwise) are determined when looking at the shaft end.

# Cast Iron, Ni-Resist or Silver Series

## Model 7560 cast-iron 8-Roller

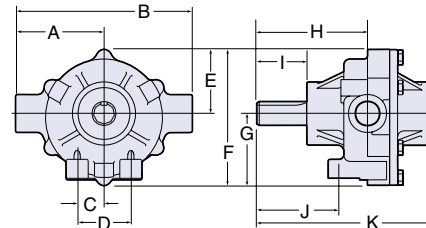


Pressure in PSI and BAR	GPM	HP	GPM	HP	GPM	HP
	L/min @540 RPM	HP	L/min @800 RPM	HP	L/min @1000 RPM	HP
0 PSI	12	.33	18.3	.89	22.5	1.56
0 BAR	45.4	.33	69.3	.89	85.2	1.56
50 PSI	11.1	.74	17.5	1.26	22	1.78
3.4 BAR	42	.74	66.2	1.26	83.3	1.78
100 PSI	10.3	1.25	16.9	1.95	21.3	2.53
6.9 BAR	39	1.25	64	1.95	80.6	2.53
150 PSI	9.5	1.77	16.1	2.65	20.6	3.5
10.3 BAR	36	1.77	60.9	2.65	78	3.5
200 PSI	8.6	2.26	15.5	3.4	20	4.2
13.8 BAR	32.5	2.26	58.7	3.4	75.7	4.2
250 PSI	7.0	2.78	14.5	4.2	18.9	5.3
17.2 BAR	29.5	2.78	54.9	4.2	71.5	5.3
300 PSI	7.1	3.3	18.9	5.3	18.0	6.1
20.7 BAR	26.9	3.3	51.9	5.3	68.1	6.1

## Features

- Max. flow: 12 gpm/45.4 L/min at 540 rpm;  
22.5 gpm/85.2 L/min at 1000 rpm
- Max. pressure: 300 psi/20.7 BAR
- Max. rated speed: 1000 rpm
- Max. fluid temperature: 140°F/60°C
- Shaft: 1/8" solid
- Port sizes: 3/4" NPT
- 1" hose barb inlet fitting for 1000 rpm operation
- Cast iron, Ni-Resist or Silver Series housing
- Shaft rotation: CCW (CW available)\*
- Weight: 13 lbs.; 5.89 kg
- Rollers: Super Rollers standard (Poly, Teflon and Buna-N available)
- Shaft Seals: Viton standard (Buna-N, leather available)
- Available PTO adapters: See page 10.
- Recommended PTO torque arm kit 3430-0540

Dimensions	
Standard	Metric
A. 3 1/2"	89 mm
B. 7"	178 mm
C. 1 1/6"	27 mm
D. 2 1/8"	64 mm
E. 2 1/2"	64 mm
F. 5 3/8"	137 mm
G. 2 3/8"	65 mm
H. 4 3/8"	111 mm
I. 1 3/2"	50 mm
J. 3 1/4"	83 mm



# Cast Iron

## Model 1200C cast-iron 4-Roller

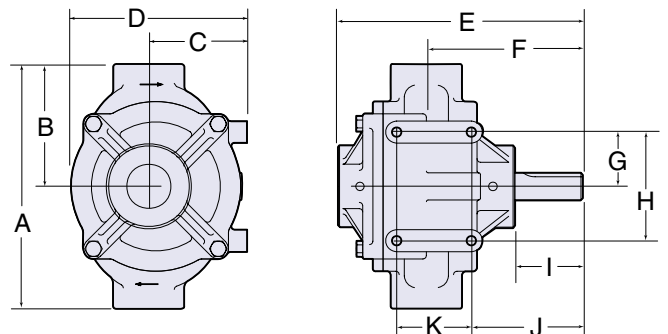


Pressure in PSI and BAR	GPM	HP	GPM	HP	GPM	HP
	L/min @540 RPM	HP	L/min @600 RPM	HP	L/min @800 RPM	HP
30 PSI	—	—	—	—	74.0	4.0
2.1 BAR	—	—	—	—	280.1	4.0
50 PSI	48.8	2.70	54.3	3.12	72.5	5.08
3.4 BAR	184.7	2.70	205.5	3.12	274.4	5.08
100 PSI	44.2	4.47	50.5	5.05	69.5	7.31
6.9 BAR	167.3	4.47	191.1	5.05	263.1	7.31
150 PSI	41.0	6.17	47.0	6.94	67.0	9.60
10.3 BAR	155.2	6.17	177.9	6.94	253.6	9.60

## Features

- Max. flow: 48.8 gpm/184.7 L/min at 540 rpm;  
74 gpm/280.1 L/min at 800 rpm
- Max. pressure: 150 psi/10.3 BAR
- Max. rated speed: 800 rpm
- Max. fluid temperature: 140°F/60°C
- Shaft size: 1" solid
- Port size: 1 1/2" NPT
- Cast iron housing
- Pump shaft rotation: CCW (CW available)\*
- Weight: 32 lbs.; 14.5 kg
- Rollers: Super Rollers standard (Poly available)
- Shaft Seals: Buna-N standard (Viton available)
- Available PTO adapters: See page 10.
- Recommended PTO mounting clip: Model No. 1520-0034

Dimensions	
Standard	Metric
A. 9"	229 mm
B. 4 1/2"	114 mm
C. 3 3/8"	92 mm
D. 6 1/2"	165 mm
E. 9 1/6"	230 mm
F. 5 13/16"	148 mm
G. 2"	51 mm
H. 4"	102 mm
I. 2 3/8"	65 mm
J. 4 3/2"	106 mm
K. 2 3/4"	70 mm



\* CCW (counterclockwise) and CW (clockwise) are determined when looking at the shaft end.

# Cast Iron, Ni-Resist or Silver Series

## Model 1500 cast-iron 6-Roller



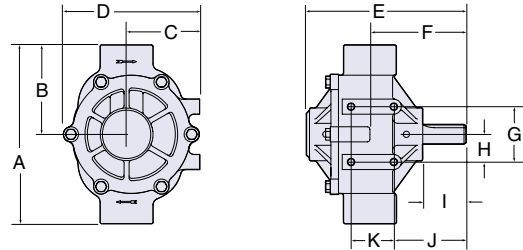
Pressure in PSI and BAR	GPM		HP		GPM		HP	
	L/min	HP	L/min	HP	L/min	HP	L/min	HP
	@540 RPM		@600 RPM		@1000 RPM			
0 PSI	33.1	.51	36.8	.66	62.1	2.02		
0 BAR	125	.51	139	.66	235	2.02		
25 PSI	29.7	1.02	33.6	1.15	58.5	3.04		
1.7 BAR	112	1.02	127	1.15	221	3.04		
50 PSI	27.8	1.45	31.7	1.68	56.9	3.69		
3.4 BAR	105	1.45	120	1.68	215	3.69		
100 PSI	24.3	2.46	28.3	2.78	53.9	5.31		
6.9 BAR	92	2.46	107	2.78	204	5.31		
150 PSI	21.0	3.54	25.0	3.95	50.9	7.12		
10.3 BAR	79.5	3.54	94.6	3.95	193	7.12		

## Features

- Max. flow: 33.1 gpm/125 L/min;  
62.1 gpm/235 L/min at 1000 rpm
- Max. pressure: 150 psi/10.3 BAR
- Max. rated speed: 1000 rpm
- Max. fluid temperature: 140°F/60°C
- Port size: 1½" NPT
- Shaft size: 1⅝" solid
- Cast iron, Ni-Resist or Silver Series housing
- Pump shaft rotation: CCW (CW available)\*
- Weight: 30 lbs.; 13.6 kg
- Rollers: Super Rollers standard (Poly and Teflon available)
- Shaft Seals: Buna-N standard (Viton and leather available)
- Available PTO adapters (forged steel recommended):  
See page 10.

## Dimensions

Standard	Metric
A. 8 ⅞"	225 mm
B. 4 ⅞"	113 mm
C. 3 ⅝"	92 mm
D. 6 ¾"	171 mm
E. 7 ⅞"	200 mm
F. 4 ¾"	121 mm
G. 2 ¾"	70 mm
H. 1 ⅝"	35 mm
I. 2 ⅝"	54 mm
J. 3 ⅝"	91 mm
K. 2 ⅝"	54 mm



# Cast Iron, Ni-Resist or Silver Series

## Model 1700 cast-iron 5-Roller



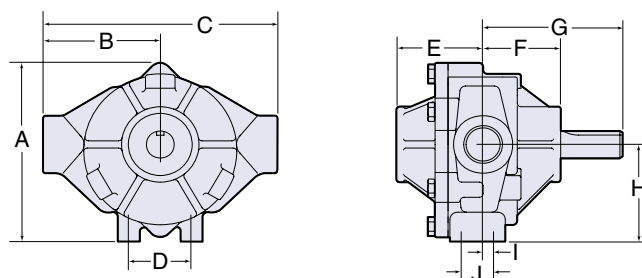
Pressure in PSI and BAR	GPM		HP		GPM		HP	
	L/min	HP	L/min	HP	L/min	HP	L/min	HP
	@540 RPM		@600 RPM		@1000 RPM			
0 PSI	25.0	2.7	28.0	.34	45.0	1.42		
0 BAR	94.6	2.7	106	.34	170	1.42		
50 PSI	21.0	1.18	24.5	1.39	43.0	3.0		
3.4 BAR	79.5	1.18	92.7	1.39	163	3.0		
100 PSI	19.0	2.13	22.0	2.36	41.0	4.67		
6.9 BAR	71.9	2.13	83.3	2.36	155	4.67		
150 PSI	17.0	2.89	20.0	3.34	39.0	6.07		
10.3 BAR	64.3	2.89	75.7	3.34	148	6.07		
200 PSI	15.0	3.85	18.0	4.39	—	—		
13.8 BAR	56.8	3.85	681	4.39	—	—		

## Features

- Max. flow: 25 gpm/94.6 L/min at 540 rpm;  
45 gpm/170 L/min at 1000 rpm
- Max. pressure: 200 psi/13.8 BAR
- Max. rated speed: 1000 rpm
- Max. fluid temperature: 140°F/60°C
- Port size: 1" NPT
- Shaft size: 1⅝" solid
- Cast iron, Ni-Resist or Silver Series housing
- Pump shaft rotation: CCW (CW available)\*
- Weight: 19 lbs.; 8.62 kg
- Rollers: Super Rollers standard (Poly and Teflon available)
- Shaft Seals: Viton standard (Buna-N and leather available)
- Available PTO adapters (forged steel recommended):  
See page 10.
- Recommended PTO torque arm kit 3430-0540

## Dimensions

Standard	Metric
A. 6 1⅜"	158 mm
B. 3 2½"	93 mm
C. 7 1⅝"	202 mm
D. 2 ⅞"	54 mm
E. 2 1⅝"	75 mm
F. 2 ⅝"	67 mm
G. 4 2⅝"	120 mm
H. 3 ⅝"	86 mm
I. ¾"	19 mm
J. 1 ⅞"	29 mm



\* CCW (counterclockwise) and CW (clockwise) are determined when looking at the shaft end.



# Cast Iron, Ni-Resist or Silver Series

Silver Series™ Model 4101-EH and 4001-EH; 4101-E2H and 4001-E2H  
12 Volt DC, 4-Roller



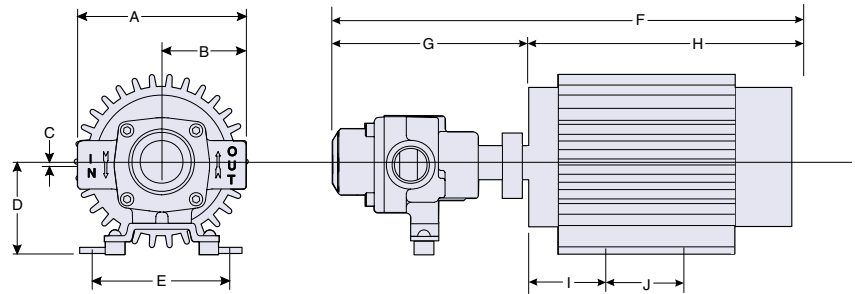
Note: All models come in either Ni-Resist or XL Silver Series housings.

## Features

- Max. flow:  
7.5 gpm/28.4 L/min for 4101-EH,  
5.9 gpm/22.3 L/min for 4101-E2H,  
10.4 gpm/39.3 L/min for 4001-EH,  
9.9 gpm/37.4 L/min for 4001-E2H
- Max. pressure:  
50 psi continuous duty for 4101-EH,  
90 psi continuous duty for 4101-E2H  
30 psi continuous duty for 4001-EH  
50 psi continuous duty for 4001-E2H
- Weight: 5-18 lbs.; 2.3-8.2 kg
- Super Rollers and Viton seals standard
- Pump shaft: ½" hollow
- Locking collar and torque arm come in each package

## Dimensions

	Standard	Metric
A.	4 ¾"	121 mm
B.	2 ¾"	60 mm
C.	½"	2 mm
D.	2 ¾"	67 mm
E.	3 ⅛"	97 mm
F.	13 ⅞"	341 mm
G.	5 ⅝"	141 mm
H.	7 ¾"	200 mm
I.	2"	51 mm
J.	2"	51 mm



Series 4101-EH and 4101-E2H				
Model 4101N-EH & 4101XL-EH				
Volts	PSI	AMPS	GPM	
12.0 (Battery) Engine Off	0	10.0	6.3	
	5	11.3	6.0	
	10	12.5	5.8	
	15	13.7	5.6	
	20	15.1	5.4	
	25	16.7	5.2	
	30	18.6	5.0	
	35	20.3	4.8	
	40	22.3	4.6	
	45	24.1	4.4	
13.5 (Alternator) Engine Running	0	10.4	7.5	
	5	11.7	7.0	
	10	13.0	6.6	
	15	14.2	6.4	
	20	15.8	6.2	
	25	17.4	6.0	
	30	19.6	5.8	
	35	20.9	5.6	
	40	22.5	5.4	
	45	24.3	5.2	
50	26.1	5.0		

Model 4101N-E2H & 4101XL-E2H			
PSI	AMPS	GPM	
0	—	—	
10	8.4	5.3	
20	11.8	4.8	
30	13.7	4.65	
40	16.4	4.4	
50	19.6	4.05	
60	22.8	3.65	
70	25.8	3.20	
80	28.9	3.00	
90	31.5	2.75	
100	34.2	2.60	
0	—	—	
10	9.1	5.9	
20	11.2	5.6	
30	13.9	5.25	
40	16.9	5.0	
50	19.5	4.7	
60	22.7	4.35	
70	25.7	4.0	
80	29.2	3.6	
90	31.9	3.4	
100	34.8	3.2	

Model 4101N-EH & 4101XL-EH			
Volts	BAR	AMPS	L/min.
12.0 (Battery) Engine Off	0	10.0	23.8
	.3	11.3	22.7
	.7	12.5	22.0
	1.0	13.7	21.2
	1.4	15.1	20.4
	1.7	16.7	19.7
	2.1	18.6	18.9
	2.4	20.3	18.2
	2.8	22.3	17.4
	3.1	24.1	16.7
13.5 (Alternator) Engine Running	0	10.4	28.4
	.3	11.7	26.5
	.7	13.0	25.0
	1.0	14.2	24.2
	1.4	15.8	23.5
	1.7	17.4	22.7
	2.1	19.6	22.0
	2.4	20.9	21.2
	2.8	22.5	20.4
	3.1	24.3	19.7
3.4	26.1	18.9	

Model 4101N-E2H & 4101XL-E2H		
BAR	AMPS	L/min.
0	—	—
.7	8.4	20.0
1.4	11.8	18.2
2.1	13.7	17.6
2.8	16.4	16.7
3.4	19.6	15.3
4.1	22.8	13.8
4.8	25.8	12.1
5.5	28.9	11.4
6.2	31.5	10.4
6.9	34.2	9.84
0	—	—
.7	9.1	22.3
1.4	11.2	21.2
2.1	13.9	19.9
2.8	16.9	18.9
3.4	19.5	17.8
4.1	22.7	16.5
4.8	25.7	15.1
5.5	29.2	13.6
6.2	31.9	12.9
6.9	34.8	12.1

Series 4001-EH and 4001-E2H				
Model 4001N-EH & 4001XL-EH				
Volts	PSI	AMPS	GPM	
12.0 (Battery) Engine Off	0	12.6	9.0	
	5	14.1	8.3	
	10	15.2	8.1	
	15	17.3	7.8	
	20	19.7	7.2	
	25	22.1	6.7	
	30	24.8	6.2	
13.5 (Alternator) Engine Running	0	13.4	10.4	
	5	14.8	9.9	
	10	16.2	9.4	
	15	18.2	8.9	
	20	20.5	8.5	
	25	22.5	8.2	
30	24.9	7.7		

Model 4001N-E2H & 4001XL-E2H		
PSI	AMPS	GPM
10	13.9	8.4
20	18.0	7.9
30	22.2	7.2
35	25.0	6.9
40	27.0	6.5
50	31.6	5.9
60	36.2	5.4
10	14.4	9.9
20	18.3	9.1
30	22.3	8.5
35	24.5	8.3
40	27.0	8.0
50	31.0	7.3
60	36.1	6.8

Model 4001N-EH & 4001XL-EH			
Volts	BAR	AMPS	L/min.
12.0 (Battery) Engine Off	0	12.6	34.1
	.3	14.1	31.4
	.7	15.2	30.7
	1.0	17.3	29.5
	1.4	19.7	27.3
	1.7	22.1	25.4
	2.1	24.8	23.5
13.5 (Alternator) Engine Running	0	13.4	39.4
	.3	14.8	37.5
	.7	16.2	35.6
	1.0	18.2	33.7
	1.4	20.5	32.2
	1.7	22.5	31.0
2.1	24.9	29.1	

Model 4001N-E2H & 4001XL-E2H		
BAR	AMPS	L/min.
.7	13.9	31.8
1.4	18.0	29.9
2.1	22.2	27.3
2.4	25.0	26.1
2.8	27.0	24.6
3.5	31.6	22.3
4.1	36.2	20.4
.7	14.4	37.5
1.4	18.3	34.4
2.1	22.3	32.2
2.4	24.5	31.4
2.8	27.0	30.3
3.5	31.0	27.6
4.1	36.1	25.7

# List of Dimensions — Hypro Adapters

## PTO Adapters (Female to Female)

Part Number	PTO (I.D.)	Pump End (I.D.)	Material	RPM	Pump Model
1320-0015	¾"	⅝"	steel	*	4000, 6500
1320-0016	⅝"	⅝"	steel	*	4000, 6500
1320-0022	1⅜" (6 spline)	⅝"	die cast	540	6500
1320-0033	1⅜" (6 spline)	1⅝"	die cast	540	1500, 1700, 7560, 7700
1320-0038	1⅜" (21 spline)	1⅝"	die cast	1000	1500, 1700, 7560
1320-0053	1⅜" (21 spline)	⅝"	die cast	1000	4000, 6500
1320-0054	¾"	1⅝"	die cast	*	1500, 1700, 7560, 7700
1320-0059	1⅜" (6 spline)	1"	die cast	540	1200/5200
1320-0076	1⅜" (6 spline)	1⅝"	forged steel	540	1500, 1700, 7560, 7700
1320-0077	1⅜" (6 spline)	⅝"	forged steel	540	6500
1320-0078	1⅜" (21 spline)	1⅝"	forged steel	1000	1500, 1700, 7560
1320-0079	1⅜" (21 spline)	⅝"	forged steel	1000	4000, 6500
1320-0080	1¾" (20 spline)	1⅝"	forged steel	1000	1500, 1700, 7560
1320-0081	1⅜" (6 spline)	1"	forged steel	540	1200/5200

## Quick Couplers (Female to Female)

Part Number	PTO (I.D.)	Pump End (I.D.)	Material	RPM	Pump Model
1321-0006	1⅜" (6 spline)	⅝"	die cast	540	6500
1321-0007	1⅜" (6 spline)	1⅝"	die cast	540	1500, 1700, 7560, 7700
1321-0008	1⅜" (21 spline)	⅝"	die cast	1000	4000, 6500
1321-0009	1⅜" (21 spline)	1⅝"	die cast	1000	1500, 1700, 7560
1321-0012	1⅜" (multi-speed)	⅝"	die cast	540/1000	4000, 6500
1321-0013	1⅜" (multi-speed)	1⅝"	die cast	540/1000	1500, 7560, 7700
1323-0072	1⅜" (6 spline)	1⅝"	forged steel	540	1500, 1700, 7560, 7700
1323-0073	1⅜" (21 spline)	1⅝"	forged steel	1000	1500, 1700, 7560
1323-0074	1⅜" (6 spline)	⅝"	forged steel	540	6500
1323-0075	1⅜" (21 spline)	⅝"	forged steel	1000	4000, 6500
1323-0076	1⅜" (multi-speed)	1⅝"	forged steel	540/1000	1500, 1700, 7560
1323-0077	1⅜" (multi-speed)	⅝"	forged steel	540/1000	4000, 6500

For fast, convenient and up-to-date information, call Hypro at:

Technical/Application ..... 800-445-8360  
Order Department ..... 800-42HYPRO (800-424-9776)  
FAX for fast delivery ..... 800-323-6496



A WICOR COMPANY

**SPRAY GROUP**

375 Fifth Avenue NW • New Brighton, MN 55112-3288  
Phone: (651) 766-6300 • 800-424-9776 • Fax: 800-323-6496  
[www.hypropumps.com](http://www.hypropumps.com)