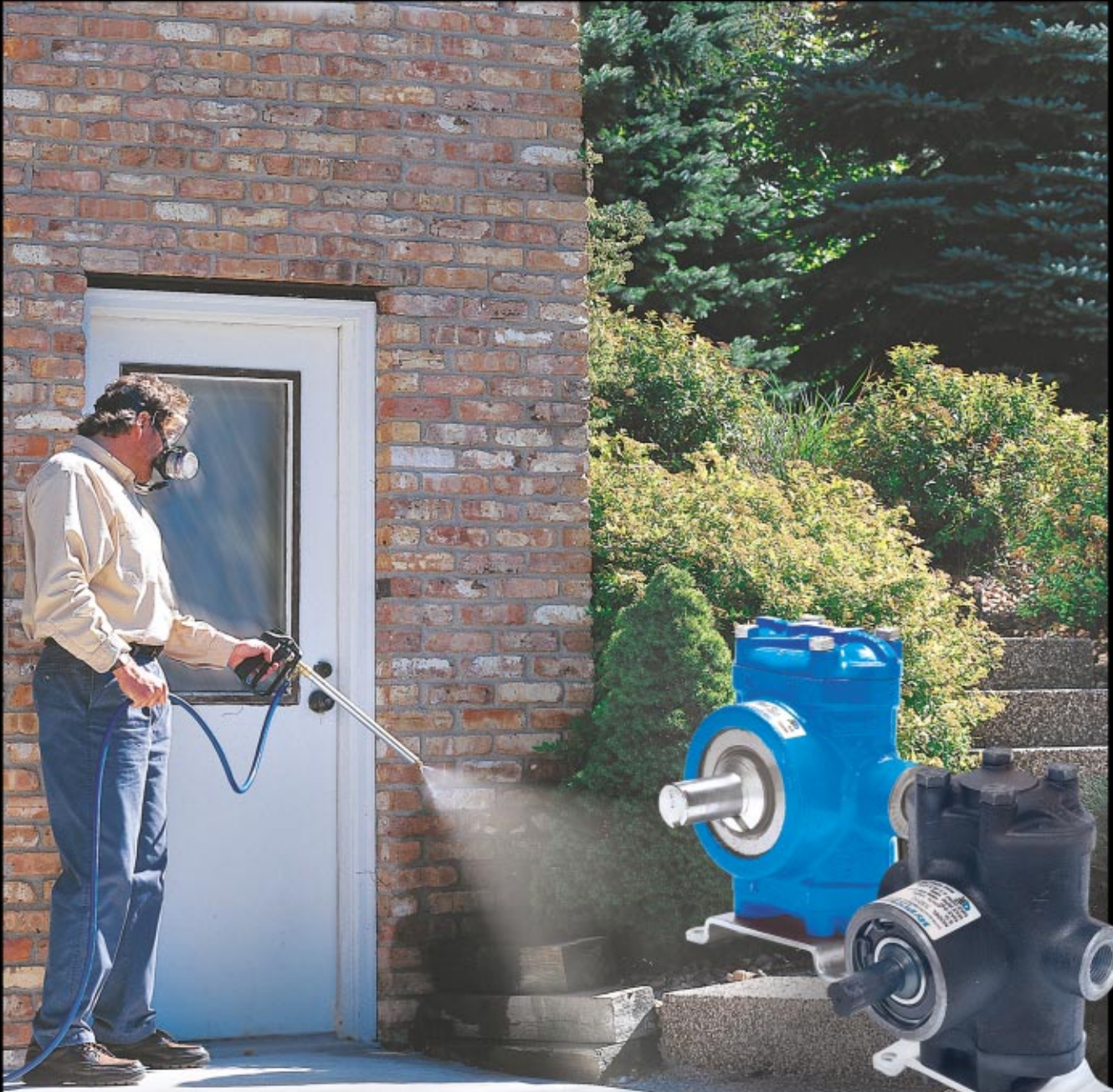



HYPRO[®]

PISTON PUMPS



PUMPS

Q U A L I T Y S I N C E 1 9 4 7

Low Flow, Medium Pressure, Positive Displacement Pumps

Hypro Corporation's Twin® piston and plunger pumps are used in a variety of spraying and pressure cleaning applications, as well as hydrostatic testing. These heavy-duty pumps are ideal for fluid handling of water and nonabrasive or general use chemicals.

All pumps are constructed from cast iron materials. They feature stainless steel valves and ball bearing, leather or fabric-reinforced Buna-N or straight Buna-N cups.

You can choose from a variety of drive systems to include: belt and pulley, 540 rpm PTO, gasoline engine or electric motor.

These pumps are available in a variety of flow and pressure ranges up to a maximum of 10 gpm and 1000 psi, with maximum fluid temperatures of 140°F (piston pumps) and 180°F (plunger pumps).

All of the Hypro piston and plunger pumps share these quality features:

- Nonabrasive and general use chemical compatibility
- Compact, lightweight and easy to install
- Replaceable leather cups for insecticides, herbicides and aromatic solvents
- Replaceable Buna-N and fabric reinforced Buna-N cups for water, soap and detergent solutions
- They are bi-rotational
- Self priming operation (piston pumps)



Big Twin®

Model 5206

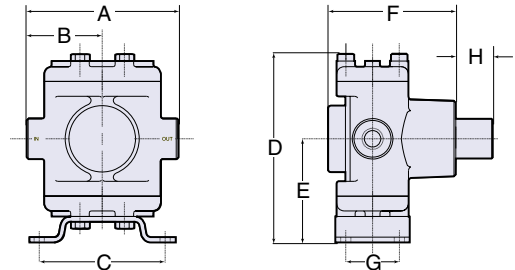


Features

- Max. flow: 8 gpm
- Max. pressure: 400 psi
- Max. rated speed: 800 rpm
- Shaft size: 1" O.D. solid shaft
1 3/8" I.D. hollow shaft
- Port sizes: 3/4" inlet, 3/4" outlet
- Max. fluid temperature: 140°F
- Weight: 18 lbs.
- Pump shaft rotation: bi-rotational
- Cups: Leather standard, fabric reinforced and Buna-N available
- Recommended to be used with a Model 3375-0003 surge tank

Dimensions	
Standard	Metric
A. 6 3/4"	171 mm
B. 3 3/8"	86 mm
C. 5"	127 mm
D. 7 1/8"	195 mm
E. 4 1/8"	103 mm
F. 6 1/8"	156 mm
G. 4 3/8"	111 mm
H. Hollow Shaft	
2 1/4"	35 mm
H. Solid Shaft	
2"	50 mm

Pressure in PSI and BAR	GPM HP		GPM HP		GPM HP		GPM HP		GPM HP		GPM HP	
	L/min	HP	L/min	HP	L/min	HP	L/min	HP	L/min	HP	L/min	HP
	@400 RPM		@500 RPM		@540 RPM		@600 RPM		@700 RPM		@800 RPM	
25 PSI	3.9	.26	4.9	.29	5.4	.31	6.0	.34	7.0	.40	8.0	.46
1.7 BAR	14.8	.26	18.5	.29	20.4	.31	22.7	.34	26.5	.40	30.3	.46
100 PSI	3.9	.40	5.0	.46	5.4	.50	6.0	.56	7.0	.65	7.9	.74
6.9 BAR	14.8	.40	18.9	.46	20.4	.50	22.7	.56	26.5	.65	29.9	.74
200 PSI	4.0	.66	5.0	.75	5.4	.81	6.0	.90	6.9	1.1	7.8	1.2
13.8 BAR	15.1	.66	18.9	.75	20.4	.81	22.7	.90	26.1	1.1	29.5	1.2
300 PSI	3.9	.89	5.0	1.1	5.3	1.2	5.9	1.3	6.9	1.5	7.7	1.7
20.9 BAR	14.8	.89	18.9	1.1	20.1	1.2	22.3	1.3	26.1	1.5	29.1	1.7
400 PSI	3.9	1.1	4.9	1.4	5.3	1.5	5.9	1.6	6.9	1.9	7.7	2.2
27.6 BAR	14.8	1.1	18.5	1.4	20.1	1.5	22.3	1.6	26.1	1.9	29.1	2.2



Big Twin®

Model 5210

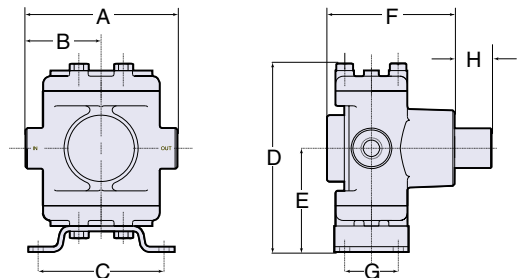


Features

- Max. flow: 10 gpm
- Max. pressure: 400 psi
- Max. rated speed: 600 rpm
- Shaft size: 1" O.D. solid shaft
1 3/8" I.D. hollow shaft
- Port sizes: 3/4" inlet, 3/4" outlet
- Max. fluid temperature: 140°F
- Weight: 18 lbs.
- Pump shaft rotation: bi-rotational
- Cups: Leather standard, fabric reinforced and Buna-N available
- Recommended to be used with a Model 3375-0003 surge tank

Dimensions	
Standard	Metric
A. 6 3/4"	171 mm
B. 3 3/8"	86 mm
C. 5"	127 mm
D. 7 1/8"	195 mm
E. 4 1/8"	103 mm
F. 6 1/8"	156 mm
G. 4 3/8"	111 mm
H. Hollow Shaft	
2 1/4"	35 mm
H. Solid Shaft	
2"	50 mm

Pressure in PSI and BAR	GPM HP		GPM HP		GPM HP		GPM HP	
	L/min	HP	L/min	HP	L/min	HP	L/min	HP
	@400 RPM		@500 RPM		@540 RPM		@600 RPM	
25 PSI	7.3	.39	8.9	.57	9.4	.66	10.0	.73
1.7 BAR	27.6	.39	33.7	.57	35.6	.66	37.9	.73
100 PSI	7.3	.69	8.9	.87	9.4	.94	9.9	1.10
6.9 BAR	27.6	.69	33.7	.87	35.6	.94	37.5	1.10
200 PSI	7.2	1.2	8.8	1.5	9.3	1.6	9.9	1.7
13.8 BAR	27.2	1.2	33.3	1.5	35.2	1.6	37.5	1.7
300 PSI	7.2	1.7	8.8	2.0	9.3	2.2	9.8	2.3
20.7 BAR	27.2	1.7	33.3	2.0	35.2	2.2	37.1	2.3
400 PSI	7.2	2.1	8.7	2.6	9.2	2.7	9.8	3.0
27.6 BAR	27.2	2.1	32.9	2.6	34.8	2.7	37.1	3.0



Small Twin®

Models 5315, 5320, 5325 and 5330



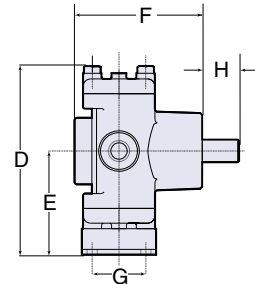
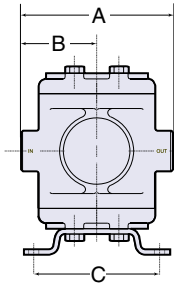
Features

- Max. flow: 1.5 to 3.0 gpm
- Max. pressure: 500 psi
- Max. rated speed: 1725 rpm
- Max. fluid temperature: 140°F
- Shaft size: 5/8" O.D. solid shaft, 5/8" I.D. hollow shaft
- Port sizes: 1/2" inlet, 1/2" outlet
- Weight: 10 lbs.
- Pump shaft rotation: bi-rotational
- Cups: Leather standard for 5300 Series (Buna-N, Teflon and Viton available)
- Injector head available
- Models require a pulsation dampener (such as a 3375-0012 pulse hose) on the discharge side

Pressure in PSI and BAR	5315		5320		5325		5330	
	GPM	HP	GPM	HP	GPM	HP	GPM	HP
	L/min	HP	L/min	HP	L/min	HP	L/min	HP
	@1725 RPM		@1725 RPM		@1725 RPM		@1725 RPM	
50 PSI	1.56	.12	2.22	.21	2.56	.25	3.02	.37
3.4 BAR	5.9	.12	8.4	.21	9.7	.25	11.4	.37
100 PSI	1.52	.15	2.18	.28	2.54	.37	3.01	.49
6.9 BAR	5.8	.15	8.3	.28	9.6	.37	11.4	.49
200 PSI	1.50	.28	2.16	.43	2.52	.52	3.00	.74
13.8 BAR	5.7	.28	8.2	.43	9.3	.52	11.4	.74
300 PSI	1.47	.35	2.12	.57	2.50	.68	2.98	.92
20.7 BAR	5.6	.35	8.0	.57	9.5	.68	11.3	.92
400 PSI	1.45	.43	2.11	.71	2.10	.82	2.96	1.11
27.6 BAR	5.5	.43	8.0	.71	7.9	.82	11.2	1.11
500 PSI	1.44	.56	2.10	.83	2.44	.96	2.94	1.23
34.5 BAR	5.5	.56	7.9	.83	9.9	.96	11.1	1.23

Dimensions

Standard	Metric
A. 5 1/8"	130 mm
B. 2 1/16"	65 mm
C. 4 1/4"	108 mm
D. 6 3/8"	162 mm
E. 3 1/2"	89 mm
F. 4 1/32"	110.3 mm
G. 1 1/16"	46 mm
H. Hollow Shaft	
7/8"	22 mm
H. Solid Shaft	
1 1/4"	32 mm



Small Twin®

Model 5324



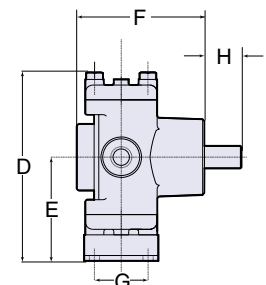
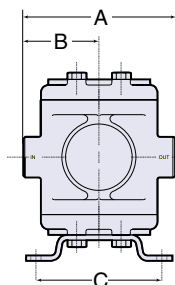
Features

- Max. flow: 2.9 gpm
- Max. pressure: 800 psi
- Max. rated speed: 1800 rpm
- Max. fluid temperature: 140°F
- Shaft size: 5/8" O.D. solid shaft, 5/8" I.D. hollow shaft
- Port sizes: 1/2" inlet, 1/2" outlet
- Weight: 11 lbs.
- Pump shaft rotation: bi-rotational
- Cups: Buna-N standard
- Injector head available
- Model 5324 requires a pulsation dampener (such as a 3375-0012 pulse hose) on the discharge side

Pressure in PSI and BAR	GPM	HP	GPM	HP	GPM	HP	GPM	HP	GPM	HP
	L/min	HP	L/min	HP	L/min	HP	L/min	HP	L/min	HP
	@1725 RPM		@1725 RPM		@1725 RPM		@1725 RPM		@1725 RPM	
100 PSI	.96	.12	1.15	.19	2.00	.28	2.42	.34	2.90	.40
6.9 BAR	3.6	.12	4.4	.19	7.6	.28	9.2	.34	11.0	.40
200 PSI	.94	.19	1.49	.30	1.98	.41	2.40	.50	2.89	.59
13.8 BAR	3.6	.19	5.6	.30	7.5	.41	9.1	.50	10.9	.59
300 PSI	.94	.26	1.48	.41	1.97	.55	2.38	.67	2.87	.80
20.7 BAR	3.6	.26	5.6	.41	7.5	.55	9.0	.67	10.9	.80
400 PSI	.95	.33	1.47	.50	1.96	.67	2.37	.83	2.85	1.00
27.6 BAR	3.6	.33	5.6	.50	7.4	.67	9.0	.83	10.8	1.00
500 PSI	.94	.39	1.47	.60	1.96	.81	2.36	.97	2.83	1.19
34.5 BAR	3.6	.39	5.6	.60	7.4	.81	8.9	.97	10.7	1.19
600 PSI	.93	.45	1.46	.69	1.95	.93	2.35	1.13	2.81	1.38
41.4 BAR	3.5	.45	5.5	.69	7.4	.93	8.9	1.13	10.6	1.38
700 PSI	.93	.52	1.46	.78	1.94	1.06	2.33	1.27	2.80	1.54
48.3 BAR	3.5	.52	5.5	.78	7.3	1.06	8.8	1.27	10.6	1.54
800 PSI	.93	.58	1.45	.87	1.93	1.16	2.32	1.42	2.79	1.69
55.2 BAR	3.5	.58	5.5	.87	7.3	1.16	8.8	1.42	10.6	1.69

Dimensions

Standard	Metric
A. 5 1/8"	130 mm
B. 2 1/16"	65 mm
C. 4 1/4"	108 mm
D. 6 3/8"	168 mm
E. 3 1/2"	89 mm
F. 4 1/16"	109.5 mm
G. 1 1/16"	46 mm
H. Hollow Shaft	
7/8"	22 mm
H. Solid Shaft	
1 1/4"	32 mm



Small Twin®

Models 5321 and 5322

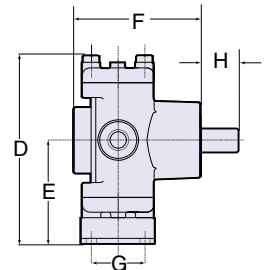
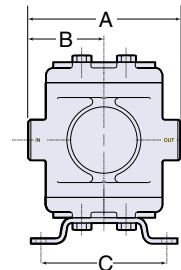


Features

- Max. flow: 2.2 gpm
- Max. pressure: 1000 psi
- Max. rated speed: 1800 rpm
- Max. fluid temperature: 180°F
- Shaft size: 5/8" O.D. solid shaft, 5/8" I.D. hollow shaft
- Port sizes: 1/2" inlet, 1/2" outlet
- Weight: 11 lbs.
- Pump shaft rotation: bi-rotational
- Plungers: stainless steel (5321) polished ceramic (5322)
- Injector head available
- Models 5321 and 5322 require a pulsation dampener (such as a 3375-0012 pulse hose) on the discharge side

Pressure in PSI and BAR	GPM	HP	GPM	HP	GPM	HP	GPM	HP
	L/min @900 RPM	HP	L/min @1200 RPM	HP	L/min @1225 RPM	HP	L/min @1450 RPM	HP
100 PSI	1.1	.2	1.5	.3	2.2	.4	1.8	.4
6.9 BAR	4.2	.2	5.7	.3	8.3	.4	6.8	.4
300 PSI	1.1	.4	1.5	.5	2.1	.7	1.8	.6
20.7 BAR	4.2	.4	5.7	.5	8.0	.7	6.8	.6
500 PSI	1.1	.5	1.5	.6	2.1	.8	1.8	.7
34.5 BAR	4.2	.5	5.7	.6	8.0	.8	6.8	.7
700 PSI	1.1	.6	1.5	.8	2.1	1.1	1.8	.9
48.3 BAR	4.2	.6	5.7	.8	8.0	1.1	6.8	.9
1000 PSI	1.1	.8	1.4	1.0	2.1	1.4	1.8	1.2
69.0 BAR	4.2	.8	5.3	1.0	8.0	1.4	6.8	1.2

Dimensions	
Standard	Metric
A. 5 1/8"	130 mm
B. 2 5/16"	65 mm
C. 4 1/4"	108 mm
D. 6 3/8"	168 mm
E. 3 1/2"	89 mm
F. 4 5/16"	109.5 mm
G. 1 13/16"	46 mm
H. Hollow Shaft	
7/8"	22 mm
H. Solid Shaft	
1 1/4"	32 mm



Small Twin®

Model 53702

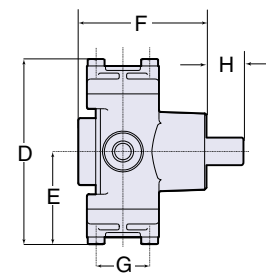
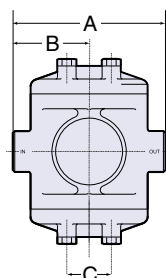


Features

- Max. flow: 2.2 gpm
- Max. pressure: 1000 psi
- Max. rated speed: 3450 rpm
- Max. fluid temperature: 180°F
- Shaft size: 5/8" I.D. hollow shaft
- Port sizes: 1/2" inlet, 1/2" outlet
- Weight: 11 lbs.
- Pump shaft rotation: bi-rotational
- Plungers: polished ceramic
- Injector head available
- Model 53702 requires a pulsation dampener (such as a 3375-0012 pulse hose) on the discharge side
- Inlet requirements: pressure feed 20-100 psi

Pressure in PSI and BAR	GPM	HP
	L/min @3450 RPM	HP
100 PSI	7.3	.39
6.9 BAR	27.6	.39
300 PSI	7.3	.69
20.7 BAR	27.6	.69
500 PSI	7.2	1.2
34.5 BAR	27.3	1.2
700 PSI	7.2	1.7
48.3 BAR	27.3	1.7
1000 PSI	7.2	2.13
69 BAR	27.3	2.13

Dimensions	
Standard	Metric
A. 5 1/8"	130 mm
B. 2 5/16"	65 mm
C. 1 1/2"	38 mm
D. 6 1/4"	159 mm
E. 3 1/8"	79 mm
F. 4 5/16"	109.5 mm
G. 1 13/16"	46 mm
H. 7/8"	22 mm



Electric motor-1 1/2 hp

Small Twin[®]

Model 53703

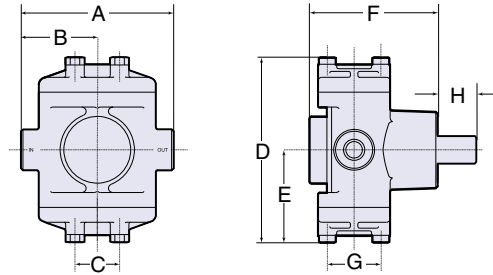


Features

- Max. flow: 2.3 gpm
- Max. pressure: 1000 psi
- Max. rated speed: 3100 rpm
- Max. fluid temperature: 180°F
- Shaft size: 5/8" I.D. hollow shaft
- Port sizes: 1/2" inlet, 1/2" outlet
- Weight: 11 lbs.
- Pump shaft rotation: bi-rotational
- Plungers: polished ceramic
- Injector head available
- Model 53703 requires a pulsation dampener (such as a 3375-0012 pulse hose) on the discharge side
- Inlet requirements: pressure feed 20-100 psi

Dimensions	
Standard	Metric
A. 5 1/8"	130 mm
B. 2 5/16"	65 mm
C. 1 1/2"	38 mm
D. 6 1/4"	159 mm
E. 3 1/8"	79 mm
F. 4 3/16"	109.5 mm
G. 1 13/16"	46 mm
H. 7/8"	22 mm

Pressure in PSI and BAR	GMP	HP
	L/min @3100 RPM	HP
100 PSI	2.3	0.4
6.9 BAR	8.7	0.4
300 PSI	2.2	.7
20.7 BAR	8.3	.7
500 PSI	2.1	.9
34.5 BAR	7.9	.9
700 PSI	2.1	1.2
48.3 BAR	7.9	1.2
1000 PSI	2.0	1.5
69.0 BAR	7.6	1.5



For fast, convenient and up-to-date information, call Hypro at:

Technical/Application 800-445-8360
 Order Department 800-42HYPRO (800-424-9776)
 FAX for fast delivery 800-323-6496



375 Fifth Avenue NW • New Brighton, MN 55112-3288
 Phone: (651) 766-6300 • 800-424-9776 • Fax: 800-323-6496
www.hypropumps.com